



## Welcome to our High Performance Catalogue

*OH Marine Equipment is a Danish manufacturer of deck hardware with more than 50 years' experience producing high quality boat fittings in aluminium and stainless steel.*

*Ole Henriksen (OH) founded the company and began making boat fittings for his own use in the late 50's as he felt the market could not supply the quality products he demanded.*

*Soon the interest for his products rose, and in the beginning of the 60's, he established a workshop in Copenhagen. As the production increased, a move to Stenloese in 1967 was necessary. In 1976 the factory in Jyllinge was built and has since been enlarged twice to accommodate rising demand.*

*Today the product line includes blocks, tracks, travellers and custom made products. We continuously develop new products and our OH Safety Rail System is tested and certified to the European Standard EN795:2012 Class D. The safety rail system is designed for use as an adjustable anchorage point for external access when cleaning or doing maintenance on yachts or other vessels. The system should only be used for personal fall protection equipment and not for lifting equipment.*

*In recent years we have introduced two new ranges of High Performance blocks (size 35 and 45), a spinnaker pole lift system, a self-locking boathook available in three lengths - 75, 100 and 125 cm - and a headboard car with 3 cars instead of the standard 2 cars for 22 mm track. Furthermore, we have made new additions to our High Performance Series: Blocks size 35, 45, 57, 75 & 100 and lead blocks size 32 & 45 with plan bearing sheaves and also introduced blocks for boom nok, furling lead blocks for 25 mm stanchions, Lazy Jack kits with 3 or 4 lines to boom and safety lines.*

*Our latest products are the OH fairlead thimbles (round) - available in 6 different sizes. They can for example be used for backstay or barber haulers. We have also made a special mainsheet car and track for the KNARR-boat, control cars with vertical draw and a very small car for main sail.*

*Our wide range of products covers equipment for boats up to around 120 feet and breaking loads up to 20,000 kg. Contact with yachtsmen worldwide ensures products with emphasis on superior design, safety, minimum wear on rope and longevity. This makes OH equipment the obvious choice when requiring high performance equipment.*

## OH MARINE EQUIPMENT

Moellehaven 5, 4040 Jyllinge, Denmark

Phone: +45 46730885

e-mail: [mail@ohmarine.com](mailto:mail@ohmarine.com) web: [www.ohmarine.com](http://www.ohmarine.com)



Content	Page
<b>News</b>	3
<b>Custom made products</b>	3
<b>How to find the right OH block</b>	4
<b>High Performance Blocks:</b>	
Size 35	5
Size 45	5
Size 57	6, 7, 8
Size 75	6, 7, 8
Size 100	9, 10
Size 125	9, 10
Size 150	9, 10
Size 175	11
Foot Blocks	12
Pivoting Lead Blocks	13
Over Top Lead Blocks	14
Mast Lead Blocks	15
Lead Blocks	16, 17, 18
<b>22 mm Travellers:</b>	
Reefing	20
Genoa	20, 21
Mainsheet	22, 23, 24
Spinnaker	25, 26
Headboard	27
Batten	27
Control	28, 29
Tracks	29
Mast Groove Slugs	29
<b>30 mm Travellers:</b>	
Reefing	30
Genoa	30, 31
Mainsheet	32, 33, 34
Spinnaker	35, 36
Headboard	37
Batten	37
Control	38, 39
Tracks	39
Mast Groove Slugs	39
<b>42 mm Travellers - Medium &amp; Large:</b>	
Genoa	40
Mainsheet	41
Spinnaker	42
Control	43
Tracks	43
<b>Spinnaker Pole Ends</b>	44
<b>Maintenance - OH Teflon Spray, Tef-Gel etc.</b>	44
<b>OH Self-locking Boathook</b>	45
<b>Spinnaker Pole Lift System</b>	46

## News

Our latest products are the OH fairlead thimbles (round) - available in 6 different sizes, a special main-sheet car and track for the KNARR-boat, control cars with vertical draw and a very small car for main sail.

The OH Safety Rail System is tested and certified to the European Standard EN795:2012 Class D. The safety rail system is designed for use as an adjustable anchorage point for external access when cleaning or doing maintenance on yachts or other vessels. The system should only be used for personal fall protection equipment and not for lifting equipment.

The High Performance blocks size 45, 57, 75 and 100 and High Performance lead blocks with sheave size 32 and 45 are now also available with plan bearing sheaves instead of the standard aluminium ball bearing sheaves. The design is the same as known from our existing High Performance Series - the only difference is the sheave. Please see our news pages for further specifications.

Furthermore, we have introduced size 35 - a new size in the High Performance Series. Size 35 is also available with plan bearing sheaves. Please see our news pages and page 5 in our catalogue for further specifications. The blocks are supplied in standard polishing or high polished stainless steel.

We have also made furling lead blocks for 25 mm stanchions. The blocks are available with or without swivel and are made in stainless steel with black delrin plan bearing or aluminium ball bearing sheave.

All our 22 and 30 mm cars (trim blocks) with black delrin plan bearing sheaves are also available with aluminium ball bearing sheaves on request.

If you have questions or need further information, please do not hesitate to contact us.

## Custom made products

Since the company's foundation we have manufactured many custom made products.

The expertise in creating custom made products is one of several areas differentiating us from many of our competitors.

For a customer in Germany we made 2 bended lead blocks in stainless steel with 6 and 8 sheaves (sheave size 32 x 17 mm, ball bearing) and bases with 4 and 6 stand-up blocks (sheave size 75 x 20 mm, ball bearing).



The bended lead block with 6 sheaves.



The base with 4 stand-up blocks.

The image shows a custom made back stay block with a stainless steel sheave of size 175 mm and a maximum working load of 12.000 kg.



**How to find the right OH block:**

- Classic Series 100:** For small sailing yachts, dinghies etc. or small jobs in larger boats - working load max 300 kg - breaking load 600 kg - max rope 8 mm
- Classic Series 200:** For sailing yachts up to 25 feet or small jobs in larger boats - working load max 500 kg - breaking load 1,000 kg - max rope 10 mm
- Classic Series 300:** For sailing yachts up to 30 feet or small jobs in larger boats - working load max 625 kg - breaking load 1,250 kg - max rope 14 mm
- Classic Series 300-2:** For sailing yachts up to 35 feet or small jobs in larger boats - working load max 775 kg - breaking load 1,550 kg - max rope 14 mm
- Classic Series 400:** For sailing yachts up to 38 feet or small jobs in larger boats - working load max 950 kg - breaking load 1,900 kg - max rope 14 mm
- Classic Series 500:** For sailing yachts up to 42 feet or small jobs in larger boats - working load max 1,350 kg - breaking load 2,700 kg - max rope 16 mm
- Classic Series 600:** For sailing yachts up to 45 feet or small jobs in larger boats - working load max 1,800 kg - breaking load 3,600 kg - max rope 16 mm
- Classic Series 700:** For sailing yachts up to 45 feet or small jobs in larger boats - working load max 1,800 kg - breaking load 3,600 kg - max rope 14 mm
- Classic Series 800:** For sailing yachts up to 45 feet or small jobs in larger boats - working load max 1,800 kg - breaking load 3,600 kg - max rope 18 mm (for blocks in aluminium)  
For sailing yachts up to 50 feet or small jobs in larger boats - working load max 2,400 kg - breaking load 4,800 kg - max rope 18 mm (for blocks in stainless steel)
- Classic Series 900:** For sailing yachts up to 60 feet or small jobs in larger boats - working load max 2,800 kg - breaking load 5,600 kg - max rope 22 mm
- High Performance Size 45:** For sailing yachts up to 25 feet or small jobs in larger boats - working load max 500 kg - breaking load 1,000 kg - max rope 10 mm
- High Performance Size 57:** For sailing yachts up to 35 feet or small jobs in larger boats - working load max 1,300 kg - breaking load 2,600 kg - max rope 14 mm
- High Performance Size 75:** For sailing yachts up to 45 feet or small jobs in larger boats - working load max 1,800 kg - breaking load 3,600 kg - max rope 16 mm
- High Performance Size 100:** For sailing yachts up to 60 feet or small jobs in larger boats - working load max 3,000 kg - breaking load 6,000 kg - max rope 22 mm
- High Performance Size 125:** For sailing yachts up to 80 feet or small jobs in larger boats - working load max 4,000 kg - breaking load 8,000 kg - max rope 22 mm
- High Performance Size 150:** For sailing yachts up to 100 feet or small jobs in larger boats - working load max 7,000 kg - breaking load 14,000 kg - max rope 25 mm
- High Performance Size 175:** For sailing yachts up to 120 feet or small jobs in larger boats - working load max 9,000 kg - breaking load 18,000 kg - max rope 30 mm

*The working loads shown in our catalogues are intended as a guide line only and are not guaranteed. Working loads are approximately 50 % of breaking loads.*



Our High Performance blocks size 35 and 45 are developed with emphasis on design and strength. The blocks have aluminium ball bearing sheaves and are mounted with rivets. The blocks are also available with black plan bearing sheaves. Please see our news pages for further specifications.

The High Performance blocks size 35 and 45 are supplied in standard polishing or high polished stainless steel.



No. 710624  
No. 710603

No. 710621  
No. 710609  
No. 710604  
No. 710611

No. 710619  
No. 710610  
No. 710612

No. 710617  
No. 710623

No. 710614  
No. 710615

No. 710620

**Block features:**

Size 35 - Block side in 1 mm stainless steel 316

- mounted with rivets

Size 45 - Block side in 1.5 mm stainless steel 316

- mounted with rivets

Ball bearing sheave in

aluminium (6082 T6)

natural anodised minimum 25 my

hub in PET (white)

Article No.	Type	SWL kg	BL kg	Sheave size mm	Max rope	Top type
710503 / 603	Single block	300 / 500	600 / 1000	35 x 10 / 45 x 12	8 / 10	Swivel with 4 / 5 mm shackle
710504 / 604	Single with becket	300 / 500	600 / 1000	35 x 10 / 45 x 12	8 / 10	Swivel with 4 / 5 mm shackle
710509 / 609	Double block	300 / 500	600 / 1000	35 x 10 / 45 x 12	8 / 10	Swivel with 4 / 5 mm shackle
710510 / 610	Double with becket	300 / 500	600 / 1000	35 X 10 / 45 x 12	8 / 10	Swivel with 4 / 5 mm shackle
710511 / 611*	Single foot block	300 / 500	600 / 1000	35 x 10 / 45 x 12	8 / 10	
710512 / 612*	Double foot block	300 / 500	600 / 1000	35 x 10 / 45 x 12	8 / 10	
710614	Fiddle block	500	1000	45/25 x 12	10	Swivel with 5 mm shackle
710615	Fiddle with becket	500	1000	45/25 x 12	10	Swivel with 5 mm shackle
710617	Fiddle with cam cleat and becket	500	1000	45/25 x 12	10	Swivel with 5 mm shackle
710519 / 619	Triple block	300 / 500	600 / 1000	35 x 10 / 45 x 12	8 / 10	Swivel with 4 / 5 mm shackle
710520 / 620	Triple with becket	300 / 500	600 / 1000	35 x 10 / 45 x 12	8 / 10	Swivel with 4 / 5 mm shackle
710621	Triple with cam cleat and becket	500	1000	45 x 12	10	Swivel with 5 mm shackle
710623**	Single block with snap shackle	500	1000	45 x 12	10	Swivel with snap shackle
710624	Single with cam cleat and becket	500	1000	45 x 12	10	Swivel with 5 mm shackle
710575 / 675	Back stay block	300 / 500	600 / 1000	35 x 10 / 45 x 12	8 / 10	5 / 6 mm pin bolt
710576 / 676	Back stay block with becket	300 / 500	600 / 1000	35 x 10 / 45 x 12	8 / 10	5 / 6 mm pin bolt
710677	Mast foot bloc	500	1000	45 x 12	10	M8 Treading

\* Fasteners (M5) included

\*\* All blocks with swivel are available with snap shackle





Our High Performance blocks size 57 and 75 are developed with emphasis on design and strength. The blocks have aluminium ball bearing sheaves and are bolted together with allen screws for easy disassembling if needed - size 57 has rivets in the top. The blocks are also available with black plan bearing sheaves. Please see our news pages for further specifications.

The High Performance blocks size 57 and 75 are supplied in standard polishing or high polished stainless steel.



No. 710705 / 710805  
No. 710675 / 710775 / 710875

No. 710724 / 710825  
No. 710704 / 710804  
No. 710723 / 710823

No. 710703 / 710803  
No. 710676 / 710776 / 710876  
No. 710677 / 710777 / 710877

**Block features:**

Size 57 - Block side in 2 mm stainless steel 316 rivets in the top

Size 75 - Block side in 2.5 mm stainless steel 316 bolted together with allen screws

Ball bearing sheave in aluminium (6082 T6) natural anodised minimum 25 my hub in PET (white)

Top in aluminium (6082 T6) natural anodised minimum 25 my

**Blocks Size 57:**

Article No.	Type	SWL kg	BL kg	Sheave size mm	Max rope	Length mm	Top type	Weight g
710703	Single block	1300	2600	57 x 16	14	120	Swivel with 6 mm shackle	215
710704	Single with becket	1300	2600	57 x 16	14	146	Swivel with 6 mm shackle	235
710705	Single stand-up	1300	2600	57 x 16	14	115	Pad eye Ø 50 mm	280
710723*	Single block with snap shackle	1300	2600	57 x 16	14	143	Swivel with snap shackle	275
710724	Single with cam cleat and becket	1300	2600	57 x 16	14	115	Swivel with 6 mm shackle	385
710775	Back stay block	1000	2000	57 x 16	14	90	8 mm pin bolt	148
710776	Back stay block with becket	1000	2000	57 x 16	14	168	8 mm pin bolt	168
710777	Mast foot block	1000	2000	57 x 16	14	122	M10 Treading	170

**Blocks Size 75:**

Article No.	Type	SWL kg	BL kg	Sheave size mm	Max rope	Length mm	Top type	Weight g
710803	Single block	1800	3600	75 x 20	16		Swivel with 10 mm shackle	520
710804	Single with becket	1800	3600	75 x 20	16		Swivel with 10 mm shackle	
710805	Single stand-up	1800	3600	75 x 20	16		Pad eye Ø 60 mm	
710823*	Single block with snap shackle	1800	3600	75 x 20	16		Swivel with snap shackle	
710824	Single with cam cleat and becket	1800	3600	75 x 20	16		Swivel with 10 mm shackle	
710875	Back stay block	1500	3000	75 x 16	14		10 mm pin bolt	
710876	Back stay block with becket	1500	3000	75 x 16	14		10 mm pin bolt	
710877	Mast foot block	1500	3000	75 x 20	16		M12 treading	

\*All blocks with swivel are available with snap shackle



Our High Performance blocks size 57 and 75 are developed with emphasis on design and strength. The blocks have aluminium ball bearing sheaves and are bolted together with allen screws for easy disassembling if needed - size 57 has rivets in the top. The blocks are also available with black plan bearing sheaves. Please see our news pages for further specifications.

The High Performance blocks size 57 and 75 are supplied in standard polishing or high polished stainless steel.



No. 710709 / 710809

No. 710717 / 710817  
No. 710710 / 710810  
No. 710714 / 710814

No. 710721 / 710821  
No. 710719 / 710819  
No. 710715 / 710815

No. 710720 / 710820

**Block features:**

Size 57 - Block side in 2 mm stainless steel 316 rivets in the top

Size 75 - Block side in 2.5 mm stainless steel 316 bolted together with allen screws

Ball bearing sheave in aluminium (6082 T6) natural anodised minimum 25 my hub in PET (white)

Top in aluminium (6082 T6) natural anodised minimum 25 my

**Blocks Size 57:**

Article No.	Type	SWL kg	BL kg	Sheave size mm	Max rope	Length mm	Top type	Weight g
710709	Double block	1300	2600	57 x 16	14	120	Swivel with 6 mm shackle	355
710710	Double with becket	1300	2600	57 x 16	14	146	Swivel with 6 mm shackle	375
710714	Fiddle block	1300	2600	57/32 x 16	14	165	Swivel with 6 mm shackle	275
710715	Fiddle with becket	1300	2600	57/32 x 16	14	185	Swivel with 6 mm shackle	290
710717	Fiddle with cam cleat and becket	1300	2600	57/32 x 16	14	185	Swivel with 6 mm shackle	425
710719	Triple block	1300	2600	57 x 16	14	120	Swivel with 6 mm shackle	500
710720	Triple with becket	1300	2600	57 x 16	14	146	Swivel with 6 mm shackle	518
710721	Triple with cam cleat and becket	1300	2600	57 x 16	14	146	Swivel with 6 mm shackle	672

**Blocks Size 75:**

Article No.	Type	SWL kg	BL kg	Sheave size mm	Max rope	Length mm	Top type	Weight g
710809	Double block	1800	3600	75 x 20	16		Swivel with 10 mm shackle	
710810	Double with becket	1800	3600	75 x 20	16		Swivel with 10 mm shackle	
710814	Fiddle block	1800	3600	75/40 x 20	16	225	Swivel with 10 mm shackle	630
710815	Fiddle with becket	1800	3600	75/40 x 20	16	250	Swivel with 10 mm shackle	650
710817	Fiddle with cam cleat and becket	1800	3600	75/40 x 20	16	250	Swivel with 10 mm shackle	810
710819	Triple block	1800	3600	75 x 20	16		Swivel with 10 mm shackle	
710820	Triple with becket	1800	3600	75 x 20	16		Swivel with 10 mm shackle	
710821	Triple with cam cleat and becket	1800	3600	75 x 20	16		Swivel with 10 mm shackle	

Our High Performance blocks size 57 and 75 are developed with emphasis on design and strength. The blocks have aluminium ball bearing sheaves and are bolted together with allen screws for easy disassembling if needed - size 57 has rivets in the top. The blocks are also available with black plan bearing sheaves. Please see our news pages for further specifications.

The High Performance blocks size 57 and 75 are supplied in standard polishing or high polished stainless steel.



No. 710730 / 710830  
No. 710731 / 710831



No. 710734 / 710834  
No. 710735 / 710835

**Block features:**

Size 57 - Block side in 2 mm stainless steel 316 rivets in the top  
Size 75 - Block side in 2.5 mm stainless steel 316 bolted together with allen screws

Ball bearing sheave in aluminium (6082 T6) natural anodised minimum 25 my hub in PET (white)

Top in aluminium (6082 T6) natural anodised minimum 25 my

**Blocks Size 57:**

Article No.	Type	SWL kg	BL kg	Sheave size mm	Max rope	Length mm	Top type	Weight g
710730	Double fiddle block	1300	2600	57/32 x 16	14	164	Swivel with 6 mm shackle	452
710731	Double fiddle with double cam cleat and cross block	1300	2600	57/32 x 16	12	215	Swivel with 6 mm shackle	715
710734	Double with cross block	1300	2600	57/32 x 16	14	174	Swivel with 6 mm shackle	425
710735	Double fiddle with double cam cleat	1300	2600	57/32 x 16	12	164	Swivel with 6 mm shackle	655

**Blocks Size 75:**

Article No.	Type	SWL kg	BL kg	Sheave size mm	Max rope	Length mm	Top type	Weight g
710830	Double fiddle block	1800	3600	75/40 x 20	16		Swivel with 10 mm shackle	
710831	Double fiddle with double cam cleat and cross block	1800	3600	75/40 x 20	12		Swivel with 10 mm shackle	
710834	Double with cross block	1800	3600	75/40 x 20	16		Swivel with 10 mm shackle	
710835	Double fiddle with double cam cleat	1800	3600	75/40 x 20	12		Swivel with 10 mm shackle	





*Our High Performance blocks size 100, 125 and 150 are developed with emphasis on design and strength. The blocks have aluminium ball bearing sheaves and are bolted together with allen screws for easy disassembling if needed.*

*The High Performance blocks size 100 are supplied in standard polishing or high polished stainless steel and are also available with black plan bearing sheaves. Please see our news pages for further specifications. The High Performance blocks size 125 and 150 are supplied in high polished stainless steel as standard.*



No. 710905 / 711105 / 711205  
No. 710909 / 711109 / 711209  
No. 710903 / 711103 / 711203

No. 710914  
No. 710910 / 711110 / 711210  
No. 710904 / 711104 / 711204

No. 710919 / 711119 / 711219  
No. 710975 / 711175 / 711275  
No. 710923 / 711123 / 711223

No. 710920 / 711120 / 711220  
No. 710976 / 711176 / 711276  
No. 710915


**Block features:**
**Size 100 - Block side in 3 mm stainless steel 316**
**Size 125 - Block side in 4 mm stainless steel 316**
**Size 150 - Block side in 5 mm stainless steel 316**
**bolted together with allen screws**
**Ball bearing sheave in  
aluminium (6082 T6)  
natural anodised minimum 25 my  
Size 100 - hub in PET (white)**
**Top in aluminium (6082 T6)  
natural anodised minimum 25 my**
**Blocks Size 100:**

Article No.	Type	SWL kg	BL kg	Sheave size mm	Max rope	Length mm	Top type	Weight g
710903	Single block	3000	6000	100 x 25	22	220	Swivel with 12 mm shackle	1110
710904	Single with becket	3000	6000	100 x 25	22	250	Swivel with 12 mm shackle	
710905	Single stand-up	3000	6000	100 x 25	22		Pad eye Ø 75 mm	
710909	Double block	3000	6000	100 x 25	22	220	Swivel with 12 mm shackle	
710910	Double with becket	3000	6000	100 x 25	22	250	Swivel with 12 mm shackle	
710914	Fiddle block	3000	6000	100/60 x 25	22	305	Swivel with 12 mm shackle	1330
710915	Fiddle with becket	3000	6000	100/60 x 25	22	340	Swivel with 12 mm shackle	1390
710919	Triple block	3000	6000	100 x 25	22	220	Swivel with 12 mm shackle	
710920	Triple with becket	3000	6000	100 x 25	22	250	Swivel with 12 mm shackle	
710923*	Single block with snap shackle	3000	6000	100 x 25	22		Swivel with snap shackle	
710975	Back stay block	2500	5000	100 x 16	14		13 mm pin bolt	
710976	Back stay block with becket	2500	5000	100 x 16	14		13 mm pin bolt	

**Blocks Size 125:**

Article No.	Type	SWL kg	BL kg	Sheave size mm	Max rope	Length mm	Top type	Weight g
711103	Single block	4000	8000	125 x 25	22		Swivel with 14 mm shackle	
711104	Single with becket	4000	8000	125 x 25	22		Swivel with 14 mm shackle	
711105	Single stand-up	4000	8000	125 x 25	22	240	Pad eye Ø 100 mm	2240
711109	Double block	4000	8000	125 x 25	22		Swivel with 14 mm shackle	
711110	Double with becket	4000	8000	125 x 25	22		Swivel with 14 mm shackle	
711119	Triple block	4000	8000	125 x 25	22		Swivel with 14 mm shackle	
711120	triple with becket	4000	8000	125 x 25	22		Swivel with 14 mm shackle	
711123*	Single block with snap shackle	4000	8000	125 x 25	22		Swivel with snap shackle	
711175	Back stay block	3000	6000	125 x 25	22		15 mm pin bolt	
711176	Back stay block with becket	3000	6000	125 x 25	22		15 mm pin bolt	

**Blocks Size 150:**

Article No.	Type	SWL kg	BL kg	Sheave size mm	Max rope	Length mm	Top type	Weight g
711203	Single block	7000	14000	150 x 30	25	320	Swivel with 16 mm shackle	3095
711204	Single with becket	7000	14000	150 x 30	25	375	Swivel with 16 mm shackle	
711205	Single stand-up	7000	14000	150 x 30	25		Pad eye Ø 100 mm	
711209	Double block	7000	14000	150 x 30	25	320	Swivel with 16 mm shackle	5010
711210	Double with becket	7000	14000	150 x 30	25	375	Swivel with 16 mm shackle	5250
711219	Triple block	7000	14000	150 x 30	25	320	Swivel with 16 mm shackle	
711220	Triple with becket	7000	14000	150 x 30	25	375	Swivel with 16 mm shackle	
711223*	Single block with snap shackle	4000	8000	150 x 30	25	298	Swivel with snap shackle	2825
711275	Back stay block	4000	8000	150 x 30	25		18 mm pin bolt	
711276	Back stay block with becket	4000	8000	150 x 30	25	280	18 mm pin bolt	

\*All blocks with swivel are available with snap shackle



*Our High Performance blocks size 175 are developed with emphasis on design and strength. The blocks have aluminium ball bearing sheaves and are bolted together with allen screws for easy disassembling if needed.*

*The High Performance blocks size 175 are supplied in high polished stainless steel.*



No. 711309  
No. 711303

No. 711310  
No. 711304

No. 711319  
No. 711375

No. 711320  
No. 711376

**Block features:**

Block side in 6 mm stainless steel 316 bolted together with allen screws

Ball bearing sheave in aluminium (6082 T6) natural anodised minimum 25 my

Top in aluminium (6082 T6) natural anodised minimum 25 my

Article No.	Type	SWL kg	BL kg	Sheave size mm	Max rope	Length mm	Top type	Weight g
711303	Single block	9000	18000	175 x 35	30		Swivel with 20 mm shackle	
711304	Single with becket	9000	18000	175 x 35	30		Swivel with 20 mm shackle	
711309	Double block	9000	18000	175 x 35	30		Swivel with 20 mm shackle	
711310	Double with becket	9000	18000	175 x 35	30		Swivel with 20 mm shackle	
711319	Triple block	9000	18000	175 x 35	30		Swivel with 20 mm shackle	
711320	Triple with becket	9000	18000	175 x 35	30		Swivel with 20 mm shackle	
711375	Back stay block	7500	15000	175 x 35	30		20 mm pin bolt	
711376	Back stay block with becket	7500	15000	175 x 35	30		20 mm pin bolt	

*Our High Performance foot blocks are developed with emphasis on design and strength. The foot blocks have aluminium ball bearing sheaves and are bolted together with allen screws for easy disassembling if needed.*

*The High Performance foot blocks are supplied in standard polishing or high polished stainless steel.*



**Block features:**

Block side in stainless steel 316  
Fasteners included

Ball bearing sheave in  
aluminium (6082 T6)  
natural anodised minimum 25 my  
hub in PET (white)

Top in aluminium (6082 T6)  
natural anodised minimum 25 my

Article No.	Type	SWL kg	BL kg	Sheaves	Sheave size mm	Max rope mm	Length mm	Width mm	Height mm	Fasteners mm	Weight g
710732	Single foot block with jammer	600	1800	1	57 x 16	14	87	61	22	6/8	255
710733	Double foot block with jammer	600	1800	2	57 x 16	14	87	61	42	6/8	445
710832	Single foot block with jammer	900	2700	1	75 x 20	16	110	79	26	8/10	470
710833	Double foot block with jammer	900	2700	2	75 x 20	16	110	79	50	8/10	745



**Block features:**

Block side in stainless steel 316  
Fasteners included

Ball bearing sheave in  
aluminium (6082 T6)  
natural anodised minimum 25 my  
Size 57, 75 & 100 - hub in PET (white)

Top in aluminium (6082 T6)  
natural anodised minimum 25 my

Article No.	Type	SWL kg	BL kg	Sheaves	Sheave size mm	Max rope mm	Length mm	Width mm	Height mm	Fasteners mm	Weight g
710711*	Single foot block	1300	2600	1	57 x 16	14	87	61	22	6/8	173
710712*	Double foot block	1300	2600	2	57 x 16	14	87	61	42	6/8	242
710811*	Single foot block	1800	3600	1	75 x 20	16	110	79	26	8/10	310
710812*	Double foot block	1800	3600	2	75 x 20	16	110	79	50	8/10	378
710911*	Single foot block	3000	6000	1	100 x 25	22	145	107	31	10/12	447
710912*	Double foot block	3000	6000	2	100 x 25	22	145	107	59	10/12	282
711111**	Single foot block	4000	8000	1	125 x 25	22	184	134	33	14/16	410
711112**	Double foot block	4000	8000	2	125 x 25	22	184	134	62	14/16	518
711211**	Single foot block	7000	14000	1	150 x 30	25	216	162	38	16/18	636
711212**	Double foot block	7000	14000	2	150 x 30	25	216	162	72	16/18	746
711311**	Single foot block	9000	18000	1	175 x 35	30			45	18/20	
711312**	Double foot block	9000	18000	2	175 x 35	30			85	18/20	

\* Also available with black plan bearing sheaves. Please see our news pages for further information. \*\* Only available in high polished stainless steel





*Our High Performance pivoting blocks are developed with emphasis on design and strength. The pivoting blocks have aluminium ball bearing sheaves and are bolted together with allen screws for of easy disassembling if needed.*

*The High Performance pivoting blocks are supplied in standard polishing or high polished stainless steel.*



No. 711091

No. 711095

**Block features:**

Block side in stainless steel 316

Ball bearing sheave in aluminium (6082 T6) natural anodised minimum 25 my  
Size 57, 75 & 100 - hub in PET (white)

Base plate in aluminium (6082 T6) natural anodised minimum 25 my

Article No.	Type	SWL kg (each sheave)	BL kg	Sheaves	Sheave size mm	Max rope mm	Length mm	Width mm	Height mm	Fasteners mm	Weight g
711091	Pivoting lead block	1300	2600	1	57 x 16	14	120	65	80	6	367
711095	Pivoting lead block double	1300	2600	2	57 x 16	14	120	108	80	6	730
711092	Pivoting lead block	1800	3600	1	75 x 20	16	156	75	102	8	670
711093	Pivoting lead block	3000	6000	1	100 x 25	20	210	98	136	10	1580
711097	Pivoting lead block	7000	14000	1	150 x 30	24	280	125	195	16	4190



*Our High Performance over top blocks are developed with emphasis on design and strength. The over top blocks have aluminium ball bearing sheaves and are bolted together with allen screws for easy disassembling if needed.*

*The High Performance over top blocks are supplied in standard polishing or high polished stainless steel.*



**Block features:**

Block side in stainless steel 316

Ball bearing sheave in aluminium (6082 T6) natural anodised minimum 25 my hub in PET (white)

Base plate in aluminium (6082 T6) natural anodised minimum 25 my

Article No.	Type	SWL kg (each sheave)	BL kg	Sheaves	Sheave size mm	Max rope mm	Length mm	Width mm	Height mm	Fasteners mm	Weight g
711055	Single over top lead block	600	1200	1	32 x 16	14		22		5	
711056	Double over top lead block	600	1200	2	32 x 16	14		44		5	
711057	Triple over top lead block	600	1200	3	32 x 16	14		66		5	
711010	Single over top lead block	1000	2000	1	45 x 16	14	63	22	75	6	148
711011	Double over top lead block	1000	2000	2	45 x 16	14	63	44	75	6	289
711012	Triple over top lead block	1000	2000	3	45 x 16	14	63	66	75	6	435
711060	Single over top lead block	1300	2600	1	57 x 16	14	68	22	86	6	208
711061	Double over top lead block	1300	2600	2	57 x 16	14	68	44	86	6	415
711062	Triple over top lead block	1300	2600	3	57 x 16	14	68	66	86	6	617
711065	Single over top lead block	1800	3600	1	75 x 20	16	95	25	117	10	450
711066	Double over top lead block	1800	3600	2	75 x 20	16	95	50	117	10	875
711067	Triple over top lead block	1800	3600	3	75 x 20	16	95	75	117	10	1325



*Our High Performance mast lead blocks are developed with emphasis on design and strength. The mast lead blocks have aluminium ball bearing sheaves and are bolted together with allen screws for easy disassembling if needed.*

*The High Performance mast lead blocks are supplied in standard polishing or high polished stainless steel.*



**Block features:**

Block side in stainless steel 316

Ball bearing sheave in aluminium (6082 T6)  
natural anodised minimum 25 my  
Size 32, 45, 57, 75 & 100 - hub in PET (white)

Article No.	Type	SWL kg (each sheave)	BL kg	Sheaves	Sheave size mm	Max rope mm	Length mm	Width mm	Height mm	Fasteners mm	Weight g
711045	Single mast lead block	600	1200	1	32 x 16	14	42	22	48	5	73
711046	Double mast lead block	600	1200	2	32 x 16	14	42	44	48	5	133
711047	Triple mast lead block	600	1200	3	32 x 16	14	42	66	48	5	200
711015	Single mast lead block	1000	2000	1	45 x 16	14	63	22	67	6	125
711016	Double mast lead block	1000	2000	2	45 x 16	14	63	44	67	6	244
711017	Triple mast lead block	1000	2000	3	45 x 16	14	63	66	67	6	368
711020	Single mast lead block	1300	2600	1	57 x 16	14	68	22	78	6	180
711021	Double mast lead block	1300	2600	2	57 x 16	14	68	44	78	6	358
711022	Triple mast lead block	1300	2600	3	57 x 16	14	68	66	78	6	530
711050	Single mast lead block	1800	3600	1	75 x 20	16	95	25	98	10	365
711051	Double mast lead block	1800	3600	2	75 x 20	16	95	50	98	10	720
711052	Triple mast lead block	1800	3600	3	75 x 20	16	95	75	98	10	1070
711070	Single mast lead block	3000	6000	1	100 x 25	22	120	31	135	12	784
711071	Double mast lead block	3000	6000	2	100 x 25	22	120	62	135	12	1560
711072	Triple mast lead block	3000	6000	3	100 x 25	22	120	93	135	12	2345
711075*	Single mast lead block	4000	8000	1	125 x 25	22	150	33	165	14	1310
711076*	Double mast lead block	4000	8000	2	125 x 25	22	150	66	165	14	2620
711077*	Triple mast lead block	4000	8000	3	125 x 25	22	150	99	165	14	3930
711080*	Single mast lead block	6000	12000	1	150 x 30	25	185	40	193	16	2385
711081*	Double mast lead block	6000	12000	2	150 x 30	25	185	80	193	16	4770
711082*	Triple mast lead block	6000	12000	3	150 x 30	25	185	120	193	16	7155

\* Only available in high polished stainless steel

*Our High Performance lead blocks are developed with emphasis on design and strength. The lead blocks have aluminium ball bearing sheaves and are bolted together with allen screws for easy disassembling if needed. The blocks are also available with black plan bearing sheaves. Please see our news pages for further specifications.*

*The High Performance lead blocks are supplied in standard polishing or high polished stainless steel.*



**Block features:**

**Block side in 2 mm stainless steel 316  
Fasteners included**

**Ball bearing sheave in  
aluminium (6082 T6)  
natural anodised minimum 25 my  
hub in PET (white)**

**Top in black delrin**

Article No.	Type	SWL kg (each sheave)	BL kg	Sheaves	Sheave size mm	Max rope mm	Length mm	Width mm	Height mm	Fasteners mm	Weight g
711000	Lead block 2 sheaved	600	1200	2	32 x 16	14	134	35	22	6	173
711001	Lead block 3 sheaved	600	1200	3	32 x 16	14	176	35	22	6	242
711002	Lead block 4 sheaved	600	1200	4	32 x 16	14	218	35	22	6	310
711003	Lead block 5 sheaved	600	1200	5	32 x 16	14	260	35	22	6	378
711004	Lead block 6 sheaved	600	1200	6	32 x 16	14	302	35	22	6	447
711035	Lead block 2 sheaved	1000	2000	2	45 x 16	14	165	48	22	6	282
711036	Lead block 3 sheaved	1000	2000	3	45 x 16	14	220	48	22	6	410
711037	Lead block 4 sheaved	1000	2000	4	45 x 16	14	275	48	22	6	518
711038	Lead block 5 sheaved	1000	2000	5	45 x 16	14	330	48	22	6	636
711039	Lead block 6 sheaved	1000	2000	6	45 x 16	14	385	48	22	6	746



*Our High Performance lead blocks are developed with emphasis on design and strength. The lead blocks have aluminium ball bearing sheaves and are bolted together with allen screws for easy disassembling if needed.*

*The High Performance lead blocks are supplied in standard polishing or high polished stainless steel.*



**Block features:**

**Block side in stainless steel 316**  
Fasteners included

**Ball bearing sheave in aluminium (6082 T6)**  
natural anodised minimum 25 my  
hub in PET (white)

**Top in aluminium (6082 T6)**  
natural anodised minimum 25 my

Article No.	Type	SWL kg (each sheave)	BL kg	Sheaves	Sheave size mm	Max rope mm	Length mm	Width mm	Height mm	Fasteners mm	Weight g
711005	Lead block 2 sheaved	1300	2600	2	57 x 16	14	185	61	22	8	495
711006	Lead block 3 sheaved	1300	2600	3	57 x 16	14	253	61	22	8	690
711007	Lead block 4 sheaved	1300	2600	4	57 x 16	14	320	61	22	8	886
711008	Lead block 5 sheaved	1300	2600	5	57 x 16	14	387	61	22	8	1082
711030	Lead block 2 sheaved	1800	3600	2	75 x 20	16	235	79	26	10/8	1063
711031	Lead block 3 sheaved	1800	3600	3	75 x 20	16	325	79	26	10/8	1446
711032	Lead block 4 sheaved	1800	3600	4	75 x 20	16	415	79	26	10/8	1829
711040	Lead block 2 sheaved	3000	6000	2	100 x 25	22	310	109	32	12/10	2230
711041	Lead block 3 sheaved	3000	6000	3	100 x 25	22	430	109	32	12/10	3115
711042	Lead block 4 sheaved	3000	6000	4	100 x 25	22	550	109	32	12/10	4000



A lead block - organiser - for high loads to divert lines from a mixed bank of stoppers and jammers. The lead block should be placed between stoppers and winch.



Black delrin plan bearing sheaves (no. 710984)



Aluminium sheaves with delrin plan bearing (no. 710987)

**Block features:**

Block side in stainless steel 316  
CC 31 mm between the sheaves  
Fasteners included

Black delrin plan bearing  
sheaves or aluminium sheaves  
with delrin plan bearing

Article No.	Type	SWL kg	BL kg	Sheaves	Sheave size mm	Sheave type	Max rope mm	Length mm	Width mm	Height mm	Fasteners mm	Weight g
<b>Delrin sheaves</b>												
710980	Lead block for high loads 3 sheaved	1800	3600	3	29 x 33.5	Delrin plan bearing	12	158	32	39	6/8	
710981	Lead block for high loads 4 sheaved	1800	3600	4	29 x 33.5	Delrin plan bearing	12	189	32	39	6/8	
710982	Lead block for high loads 5 sheaved	1800	3600	5	29 x 33.5	Delrin plan bearing	12	220	32	39	6/8	
710983	Lead block for high loads 6 sheaved	1800	3600	6	29 x 33.5	Delrin plan bearing	12	251	32	39	6/8	
710984	Lead block for high loads 7 sheaved	1800	3600	7	29 x 33.5	Delrin plan bearing	12	282	32	39	6/8	
<b>Aluminium sheaves</b>												
710985	Lead block for high loads 3 sheaved	1800	3600	3	29 x 33.5	Aluminium with delrin plan bearing	12	158	32	39	6/8	
710986	Lead block for high loads 4 sheaved	1800	3600	4	29 x 33.5	Aluminium with delrin plan bearing	12	189	32	39	6/8	
710987	Lead block for high loads 5 sheaved	1800	3600	5	29 x 33.5	Aluminium with delrin plan bearing	12	220	32	39	6/8	
710988	Lead block for high loads 6 sheaved	1800	3600	6	29 x 33.5	Aluminium with delrin plan bearing	12	251	32	39	6/8	
710989	Lead block for high loads 7 sheaved	1800	3600	7	29 x 33.5	Aluminium with delrin plan bearing	12	282	32	39	6/8	





Choose the 22 mm travellers with recirculating balls if you want to adjust the sheet angle, even under heavy loads, and the slide rods travellers if you want a higher safe working load (SWL).



No. 02360

**Reefing car features:**  
Car body in aluminium (6082 T6)  
Anodised minimum 25 my  
Available in natural or black colour  
End caps in black delrin  
Block side in stainless steel 316  
with black delrin plan bearing sheaves

How to mount the reefing car

Article No.	Type	SWL kg	BL kg	Sheave size mm	Sheave type	Max rope mm	Length mm	Slide type	Weight g	Track mm
02360	One line reefing car 22 mm	800	1600	35 x 10	Delrin plan bearing	8	123	Delrin balls	255	22



No. 02300  
No. 02301



No. 02303  
No. 02304



No. 02305  
No. 02306



No. 02307  
No. 02308

**Genoa car features:**

Car body in aluminium (6082 T6)  
Anodised minimum 25 my  
Available in natural or black colour

End caps in black delrin  
Polished stainless steel 316 stirrup,  
pivots 45 degrees to each side  
with aluminium ball bearing sheave

Control blocks in stainless steel 316  
with black delrin plan bearing  
sheave 35 x 10 mm  
Max rope diameter 8 mm  
SWL on control line 300 kg

Article No.	Type	SWL kg	BL kg	Sheave size mm	Sheave type	Max rope mm	Length mm	Slide type	Weight g	Track mm
<b>Delrin Balls</b>										
02300	Genoa car with stop	900	1800	44 x 22.5	Aluminium ball bearing	18	120	Delrin Balls	426	22
02303	Genoa car with eye	900	1800	44 x 22.5	Aluminium ball bearing	18	125	Delrin Balls	418	22
02305	Genoa car with block	1000	2000	44 x 22.5	Aluminium ball bearing	18	155	Delrin Balls	495	22
02307	Genoa car with double block	1000	2000	44 x 22.5	Aluminium ball bearing	18	155	Delrin Balls	520	22
<b>Delrin Rods</b>										
02301	Genoa car with stop	1000	2000	44 x 22.5	Aluminium ball bearing	18	120	Delrin Rods	426	22
02304	Genoa car with eye	1000	2000	44 x 22.5	Aluminium ball bearing	18	125	Delrin Rods	418	22
02306	Genoa car with block	1200	2400	44 x 22.5	Aluminium ball bearing	18	155	Delrin Rods	495	22
02308	Genoa car with double block	1200	2400	44 x 22.5	Aluminium ball bearing	18	155	Delrin Rods	520	22



Choose the 22 mm travellers with recirculating balls if you want to adjust the sheet angle, even under heavy loads, and the slide rods travellers if you want a higher safe working load (SWL).

All cars (trim blocks) with black delrin plan bearing sheaves are also available with aluminium ball bearing sheaves.



No. 02277  
No. 02278



No. 02279  
No. 02280



No. 02290  
No. 02295



No. 02291  
No. 02296

**Genoa car features:**

Car body in aluminium (6082 T6)  
Anodised minimum 25 my  
Available in natural or black colour

End caps in black delrin  
Polished stainless steel 316 stirrup,  
pivots 45 degrees to each side  
with black delrin plan bearing sheave

Control blocks in stainless steel 316  
with black delrin plan bearing  
sheave 35 x 10 mm  
Max rope diameter 8 mm  
SWL on control line 300 kg

Article No.	Type	SWL kg	BL kg	Sheave size mm	Sheave type	Max rope mm	Length mm	Slide type	Weight g	Track mm
<b>Delrin Balls</b>										
02278	Genoa car with stop	900	1800	44 x 22.5	Delrin plan bearing	18	125	Delrin Balls	401	22
02280	Genoa car with double block	1000	2000	44 x 22.5	Delrin plan bearing	18	155	Delrin Balls	500	22
02295	Genoa car with block	1000	2000	44 x 22.5	Delrin plan bearing	18	155	Delrin Balls	475	22
02296	Genoa car with eye	900	1800	44 x 22.5	Delrin plan bearing	18	125	Delrin Balls	396	22
<b>Delrin Rods</b>										
02277	Genoa car with stop	1000	2000	44 x 22.5	Delrin plan bearing	18	125	Delrin Rods	401	22
02279	Genoa car with double block	1200	2400	44 x 22.5	Delrin plan bearing	18	155	Delrin Rods	500	22
02290	Genoa car with block	1200	2400	44 x 22.5	Delrin plan bearing	18	155	Delrin Rods	475	22
02291	Genoa car with eye	1000	2000	44 x 22.5	Delrin plan bearing	18	125	Delrin Rods	396	22

Choose the 22 mm travellers with recirculating balls if you want to adjust the sheet angle, even under heavy loads, and the slide rods travellers if you want a higher safe working load (SWL).



No. 02249  
No. 02250



No. 02254  
No. 02255



No. 02260  
No. 02261



No. 02263  
No. 02264



No. 02256  
No. 02257



No. 02258  
No. 02259



No. 02248 - NEWS!

**Car features:**

Car body in aluminium (6082 T6)  
Anodised minimum 25 my  
Available in natural or black colour

End caps in black delrin  
Polished stainless steel 316 eye  
pivots 45 degrees to each side

Control blocks in stainless steel 316  
with black delrin plan bearing  
sheave 35 x 10 mm  
Max rope diameter 8 mm  
SWL on control blocks 300 kg

Article No.	Type	SWL kg	BL kg	Sheave size mm	Sheave type	Max rope mm	Length mm	Slide type	Weight g	Track mm
<b>Delrin Balls</b>										
02248	Mainsheet car, shackle and adjustable stop * - NEWS!	900	1800	-	-	-	125	Delrin Balls	280	22
02250	Mainsheet car with eye and sheaves	900	1800	25 x 10	Delrin plan bearing	8	120	Delrin Balls	287	22
02254	Car with shackle	900	1800				125	Delrin Balls	239	22
02256	Car with shackle	425	850				80	Delrin Balls	159	22
02258	Car with shackle and adjustable stop	525	1050				95	Delrin Balls	208	22
02260	Outhaulcar with block	900	1800	35 x 10	Delrin plan bearing	8	125	Delrin Balls	275	22
02264	Outhaulcar with double block	900	1800	35 x 10	Delrin plan bearing	8	125	Delrin Balls	300	22
<b>Delrin Rods</b>										
02249	Mainsheet car with eye and blocks	1000	2000	25 x 10	Delrin plan bearing	8	120	Delrin Rods	401	22
02255	Car with shackle	1000	2000				125	Delrin Rods	500	22
02257	Car with shackle	500	1000				80	Delrin Rods	475	22
02259	Car with shackle and adjustable stop	625	1250				95	Delrin Rods	396	22
02261	Outhaulcar with block	1000	2000	35 x 10	Delrin plan bearing	8	125	Delrin Rods	426	22
02263	Outhaulcar with double block	1000	2000	35 x 10	Delrin plan bearing	8	125	Delrin Rods	418	22

\* Only available in natural/silver colour





Choose the 22 mm travellers with recirculating balls if you want to adjust the sheet angle, even under heavy loads, and the slide rods travellers if you want a higher safe working load (SWL).



No. 02281  
No. 02282



No. 02283  
No. 02284



No. 02285  
No. 02286



No. 02287  
No. 02288

**Car features:**

Car body in aluminium (6082 T6)  
Anodised minimum 25 my  
Available in natural or black colour

End caps in black delrin  
6 mm eye in polished stainless steel 316  
pivots 45 degrees to each side  
Cam cleats are adjustable in 3 positions

Control blocks in stainless steel 316  
with black delrin plan bearing  
sheave 35 x 10 mm  
Max rope diameter 8 mm  
SWL on control blocks 300 kg

Article No.	Type	SWL kg	BL kg	Sheave size mm	Sheave type	Max rope mm	Length mm	Slide type	Weight g	Track mm
<b>Delrin Balls</b>										
02282	Mainsheet car with double blocks, becket and cam cleats	1000	2000	35 x 10	Delrin plan bearing	8	225	Delrin Balls	745	22
02284	Mainsheet car with blocks, becket and cam cleats	1000	2000	35 x 10	Delrin plan bearing	8	225	Delrin Balls	700	22
02286	Mainsheet car with blocks	1000	2000	35 x 10	Delrin plan bearing	8	180	Delrin Balls	396	22
02288	Mainsheet car with double blocks	1000	2000	35 x 10	Delrin plan bearing	8	180	Delrin Balls	445	22
<b>Delrin Rods</b>										
02281	Mainsheet car with double blocks, becket and cam cleats	1200	2400	35 x 10	Delrin plan bearing	8	225	Delrin Rods	745	22
02283	Mainsheet car with blocks, becket and cam cleats	1200	2400	35 x 10	Delrin plan bearing	8	225	Delrin Rods	700	22
02285	Mainsheet car with blocks	1200	2400	35 x 10	Delrin plan bearing	8	180	Delrin Rods	396	22
02287	Mainsheet car with double blocks	1200	2400	35 x 10	Delrin plan bearing	8	180	Delrin Rods	445	22



Choose the 22 mm travellers with recirculating balls if you want to adjust the sheet angle, even under heavy loads, and the slide rods travellers if you want a higher safe working load (SWL).



No. 02294  
No. 02299



No. 02313  
No. 02314



No. 02317  
No. 02318



No. 2292 - NEWS!

**Car features:**

Car body in aluminium (6082 T6)  
Anodised minimum 25 my  
Available in natural or black colour

End caps in black delrin  
6 mm eye in polished stainless steel 316  
pivots 45 degrees to each side  
Cam cleats are adjustable i 3 positions

Control blocks in stainless steel 316  
with black delrin plan bearing  
sheave 35 x 10 mm  
Max rope diameter 8 mm  
SWL on control blocks 300 kg

Article No.	Type	SWL kg	BL kg	Sheave size mm	Sheave type	Max rope mm	Length mm	Slide type	Weight g	Track mm
<b>Delrin Balls</b>										
02292	Mainsheet car with cam cleats, 2 sheaves and clips - NEWS!	900	1800	25 x 12	Delrin plan bearing	8	120	Delrin Balls	460	22
02299	Mainsheet car with blocks and cam cleat	1000	2000	35 x 10	Delrin plan bearing	8	180	Delrin Balls	583	22
02314	Mainsheet car with blocks and becket	1000	2000	35 x 10	Delrin plan bearing	8	225	Delrin Balls	510	22
02318	Mainsheet car with double blocks and becket	1000	2000	35 x 10	Delrin plan bearing	8	225	Delrin Balls	557	22
<b>Delrin Rods</b>										
02294	Mainsheet car with blocks and cam cleat	1200	2400	35 x 10	Delrin plan bearing	8	180	Delrin Rods	583	22
02313	Mainsheet car with blocks and becket	1200	2400	35 x 10	Delrin plan bearing	8	225	Delrin Rods	510	22
02317	Mainsheet car with double blocks and becket	1200	2400	35 x 10	Delrin plan bearing	8	225	Delrin Rods	557	22



Choose the 22 mm travellers with recirculating balls if you want to adjust the pole angle, even under heavy loads, and the slide rods travellers if you want a higher safe working load (SWL).



No. 02275  
No. 02276



No. 02311  
No. 02312



No. 02293  
No. 02298

See page 44 for pole ends

**Car features:**

Car body in aluminium (6082 T6)  
Anodised minimum 25 my  
Available in natural or black colour

End caps in black delrin  
21.5 mm bajonet in aluminium  
and polished stainless steel 316  
pivots 95 degrees to each side

Control blocks in stainless steel 316  
with black delrin plan bearing  
sheave 35 x 10 mm  
Max rope diameter 8 mm  
SWL on control line 300 kg

Article No.	Type	SWL kg	BL kg	Sheave size mm	Sheave type	Max rope mm	Length mm	Slide type	Weight g	Track mm
<b>Delrin Balls</b>										
02276	Spinnaker car with blocks and 21.5 mm bajonet for pole end	1275	2550	35 x 10	Delrin plan bearing	8	225	Delrin Balls	742	22
02298	Spinnaker car with shackles and 21.5 mm bajonet for pole end	950	1900			8	135	Delrin Balls	580	22
02312	Spinnaker car with stop and 21.5 mm bajonet for pole end	900	1800				125	Delrin Balls		22
<b>Delrin Rods</b>										
02275	Spinnaker car with blocks and 21.5 mm bajonet for pole end	1500	3000	35 x 10	Delrin plan bearing	8	225	Delrin Rods	742	22
02293	Spinnaker car with shackles and 21.5 mm bajonet for pole end	1050	2100			8	135	Delrin Rods	580	22
02311	Spinnaker car with stop and 21.5 mm bajonet for pole end	1000	2000				125	Delrin Rods		22

Choose the 22 mm travellers with recirculating balls if you want to adjust the pole angle, even under heavy loads, and the slide rods travellers if you want a higher safe working load (SWL).



No. 02309  
No. 02310

*Our products require only a minimum of maintenance. However, all equipment needs occasional cleaning. The best way is simply to clean in fresh water, when you are cleaning the boat and after having dried up spray with our OH Teflon Dry Spray. It is important that you DON'T use products containing silicon, oil etc. as they attract salt and dirt. It will end up working as a grinding compound in bearings, hubs etc.*



No. 02265  
No. 02266



No. 02289  
No. 02297

**Car features:**

Car body in aluminium (6082 T6)  
Anodised minimum 25 my  
Available in natural or black colour

End caps in black delrin  
Ring (32 x 40 mm) in polished  
stainless steel 316

Control blocks in stainless steel 316  
with black plan bearing  
sheave 35 x 10 mm  
Max rope diameter 8 mm  
SWL on control blocks 300 kg

Article No.	Type	SWL kg	BL kg	Sheave size mm	Sheave type	Max rope mm	Length mm	Slide type	Weight g	Track mm
<b>Delrin Balls</b>										
02266	Spinnaker car with ring (inside 32 mm) and stop	900	1800				125	Delrin Balls	354	22
02297	Spinnaker car with ring (inside 32 mm) and 5 mm shackles	900	1800			8	125	Delrin Balls	358	22
02310	Spinnaker car with ring (inside 32 mm) and blocks	1100	2200	35 x 10	Delrin plan bearing	8	225	Delrin Balls	542	22
<b>Delrin Rods</b>										
02265	Spinnaker car with ring (inside 32 mm) and stop	1000	2000				125	Delrin Rods	354	22
02289	Spinnaker car with ring (inside 32 mm) and 5 mm shackles	1000	2000			8	125	Delrin Rods	358	22
02309	Spinnaker car with ring (inside 32 mm) and blocks	1300	2600	35 x 10	Delrin plan bearing	8	225	Delrin Rods	542	22



Choose the 22 mm travellers with recirculating balls if you want to adjust the main sail, even under heavy loads, and the slide rods travellers if you want a higher safe working load (SWL).



No. 02326



No. 02327 / 02328 / 02330 / 02331



No. 02334  
No. 02335



No. 02332  
No. 02333



No. 02341- NEWS!



No. 02338  
No. 02339



No. 02336  
No. 02337

**Car features:**

Car body in aluminium (6082 T6)  
Anodised minimum 25 my  
Available in natural or black colour

End caps in black delrin  
Toggle and thread in aluminium  
Anodised minimum 25 my

See page 29 for tracks  
and mast groove slugs

Article No.	Type	SWL kg	BL kg	Width mm	Length mm	Slide type	Weight g	Track mm
<b>Delrin Balls</b>								
02326	Headboard car with stainless steel holder for headboard, 3 cars	2000	4000	51	345	Delrin Balls	1700	22
02328	Headboard car with stainless steel holder for headboard	1250	2500	51	208	Delrin Balls	975	22
02330	Headboard car with stainless steel holder for headboard	1400	2800	51	250	Delrin Balls	1240	22
02332	Batten car with toggle and M10 mm tread for retainer	500	1000	51	83.5	Delrin Balls	217	22
02334	Batten car with toggle and M10 mm tread for retainer	325	650	51	53.5	Delrin Balls	150	22
02336	Webbing car	325	650	51	53.5	Delrin Balls	118	22
02338	Webbing car	500	1000	51	83.5	Delrin Balls	184	22
<b>Delrin Rods</b>								
02327	Headboard car with stainless steel holder for headboard	1400	2800	51	250	Delrin Rods	865	22
02331	Headboard car with stainless steel holder for headboard	1250	2500	51	208	Delrin Rods	655	22
02333	Batten car with toggle and M10 mm tread for retainer	600	1200	51	83.5	Delrin Rods	217	22
02335	Batten car with toggle and M10 mm tread for retainer	400	800	51	53.5	Delrin Rods	150	22
02337	Webbing car	400	800	51	53.5	Delrin Rods	118	22
02339	Webbing car	600	1200	51	83.5	Delrin Rods	184	22
02341	Car, main sail, very small (end caps in aluminium) - NEWS!	400	800	51	35	Delrin Rods	90	22





No. 02253



No. 02245\* - NEWS!



No. 02272



No. 02271



No. 02270



No. 02268

**Car features:**

Car body in aluminium (6082 T6)  
Anodised minimum 25 my  
Available in natural or black colour

End caps in black delrin  
8 mm Pinol screw, ables  
you to lock it to the track  
Cam cleats are adjustable in 3 positions

Control blocks in stainless steel 316  
with black delrin plan bearing  
sheave 35 x 10 mm  
Max rope diameter 8 mm  
Max SWL on control line 300 kg

Article No.	Type	SWL kg	BL kg	Sheave size mm	Sheave type	Max rope mm	Length mm	Slide type	Weight g	Track mm
<b>Delrin Rods</b>										
02245**	Control block, single, vertical draw - <b>NEWS!</b>	300	600	25 x 12	Delrin plan bearing	10	69	Delrin Rods	210	22
02247**	Control block, double, vertical draw - <b>NEWS!</b>	300	600	25 x 12	Delrin plan bearing	10	69	Delrin Rods	285	22
02253	Stop adjustable	300	600				55	Delrin Rods	113	22
02267	Control block double with becket and cam cleat (Starboard)	300	600	35 x 10	Delrin plan bearing	8	120	Locked	380	22
02268	Control block double with becket and cam cleat (Port)	300	600	35 x 10	Delrin plan bearing	8	120	Locked	375	22
02269	Control block with becket and cam cleat (Starboard)	300	600	35 x 10	Delrin plan bearing	8	120	Locked	350	22
02270	Control block with becket and cam cleat (Port)	300	600	35 x 10	Delrin plan bearing	8	120	Locked	350	22
02271	Control block double with becket	300	600	35 x 10	Delrin plan bearing	8	120	Locked	280	22
02272	Control block with becket	300	600	35 x 10	Delrin plan bearing	8	120	Locked	265	22

\* Available with two sheaves (double)

\*\* Available with aluminium ball bearing sheave on request

Article No.	Type	Screw size mm ***	Eye mm
007520	Clips for line/becket - <b>NEWS!</b>	5	Ø9
007521	Clips for line/becket - <b>NEWS!</b>	6	Ø9
008820	Clips for line/becket - <b>NEWS!</b>	6	Ø12

\*\*\* Not included





No. 02315



No. 02319



No. 02316



No. 02321

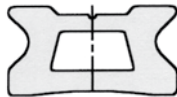
**Car features:**

Car body in aluminium (6082 T6)  
Anodised minimum 25 my  
Available in natural or black colour

End caps in black delrin  
8 mm Pinol screw, ables  
you to lock it to the track  
Cam cleats are adjustable in 3 positions

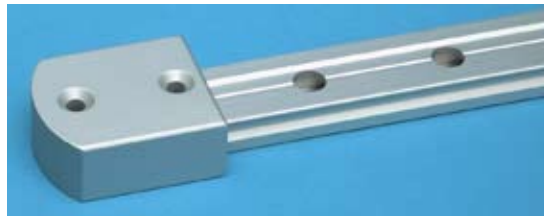
Control blocks in stainless steel 316  
with black delrin plan bearing  
sheave 35 x 10 mm  
Max rope diameter 8 mm  
Max SWL on control line 300 kg

Article No.	Type	SWL kg	BL kg	Sheave size mm	Sheave type	Max rope mm	Length mm	Slide type	Weight g	Track mm
<b>Delrin Rods</b>										
02315	Control block	300	600	35 x 10	Delrin plan bearing	8	85	Locked	185	22
02316	Control block double	300	600	35 x 10	Delrin plan bearing	8	85	Locked	210	22
02319	Control block with cam cleat (Port)	300	600	35 x 10	Delrin plan bearing	8	85	Locked	280	22
02320	Control block with cam cleat (Starboard)	300	600	35 x 10	Delrin plan bearing	8	85	Locked	280	22
02321	Control block double with cam cleat (Port)	300	600	35 x 10	Delrin plan bearing	8	85	Locked	305	22
02322	Control block double with cam cleat (Starboard)	300	600	35 x 10	Delrin plan bearing	8	85	Locked	305	22

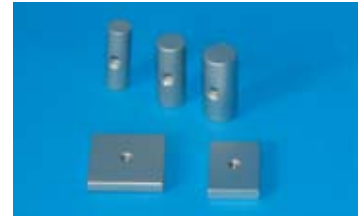


**Track features:**

Track in aluminium (6082 T6)  
Anodised minimum 25 my  
Available in natural or black colour



No. 03309



Mast groove slugs

Article No.	Type	Length m	Width mm	Height mm	Hole pitch mm	Fasteners mm	Weight g	Compatibility
03320	22 mm Track	1.0	22	13	50	5	645	Ronstan, Harken
03321	22 mm Track	1.5	22	13	50	5	698	Ronstan, Harken
03322	22 mm Track	2.0	22	13	50	5	930	Ronstan, Harken
03323	22 mm Track	2.5	22	13	50	5	1163	Ronstan, Harken
03324	22 mm Track	3.0	22	13	50	5	1395	Ronstan, Harken
03325	22 mm Track	4.0	22	13	50	5	1860	Ronstan, Harken
03326	22 mm Track	5.0	22	13	50	5	2325	Ronstan, Harken
03327	22 mm Track	6.0	22	13	50	5	2790	Ronstan, Harken
03302	Delrin end cap for 22 mm track	26 mm	26	14.5		5	12	
03309	Alu end stop for 22 mm track	45 mm	30	20			40	
03370	22 mm track assembly	40 mm	8	5			4	
03374	Mast groove slug for 22 mm track	30 mm	Ø 14			5		
03375	Mast groove slug for 22 mm track	30 mm	Ø 10			5		
03376	Mast groove slug for 22 mm track	30 mm	Ø 12			5		
03377	Mast groove slug for 22 mm track	30 mm	25	5		5		
03390	Mast groove slug for 22 mm track	20 mm	30	5		5		
03391	Mast groove slug for 22 mm track	30 mm	30	5		5		
03392	Mast groove slug for 22 mm track	30 mm	30	6		5		

Choose the 30 mm travellers with recirculating balls if you want to adjust the sheet angle, even under heavy loads, and the slide rods travellers if you want a higher safe working load (SWL).



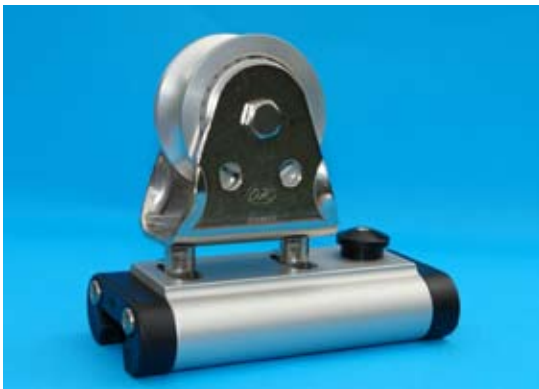
No. 03160

**Reefing car features:**

- Car body in aluminium (6082 T6)
- Anodised minimum 25 my
- Available in natural or black colour
- End caps in black delrin
- Block side in stainless steel 316 with black delrin plan bearing sheaves

**How to mount the reefing car**

Article No.	Type	SWL kg	BL kg	Sheave size mm	Sheave type	Max rope mm	Length mm	Slide type	Weight g	Track mm
03160	One line reefing car 30 mm	1200	2400	45 x 12	Delrin plan bearing	12	155	Delrin balls	470	30



No. 03100  
No. 03101



No. 03103  
No. 03104



No. 03105  
No. 03106



No. 03107  
No. 03108

**Genoa car features:**

- Car body in aluminium (6082 T6)
- Anodised minimum 25 my
- Available in natural or black colour

- End caps in black delrin
- Polished stainless steel 316 stirrup, pivots 45 degrees to each side with aluminium ball bearing sheave

- Control blocks in stainless steel 316 with black delrin plan bearing sheave 45 x 12 mm
- Max rope diameter 10 mm
- SWL on control line 500 kg

Article No.	Type	SWL kg	BL kg	Sheave size mm	Sheave type	Max rope mm	Length mm	Slide type	Weight g	Track mm
<b>Delrin Balls</b>										
03100	Genoa car with stop	2000	4000	60 x 33	Aluminium ball bearing	16	140	Delrin Balls		30
03103	Genoa car with eye	2000	4000	60 x 33	Aluminium ball bearing	16	160	Delrin Balls		30
03105	Genoa car with block	2150	4300	60 x 33	Aluminium ball bearing	16	180	Delrin Balls		30
03107	Genoa car with double block	2150	4300	60 x 33	Aluminium ball bearing	16	180	Delrin Balls		30
<b>Delrin Rods</b>										
03101	Genoa car with stop	2300	4600	60 x 33	Aluminium ball bearing	16	140	Delrin Rods		30
03104	Genoa car with eye	2500	5000	60 x 33	Aluminium ball bearing	16	180	Delrin Rods		30
03106	Genoa car with block	2500	5000	60 x 33	Aluminium ball bearing	16	180	Delrin Rods		30
03108	Genoa car with double block	2300	4600	60 x 33	Aluminium ball bearing	16	160	Delrin Rods		30



Choose the 30 mm travellers with recirculating balls if you want to adjust the sheet angle, even under heavy loads, and the slide rods travellers if you want a higher safe working load (SWL).

All cars (trim blocks) with black delrin plan bearing sheaves are also available with aluminium ball bearing sheaves.



No. 03077  
No. 03078



No. 03079  
No. 03080



No. 03090  
No. 03095



No. 03091  
No. 03096

**Genoa car features:**

Car body in aluminium (6082 T6)  
Anodised minimum 25 my  
Available in natural or black colour

End caps in black delrin  
Polished stainless steel 316 stirrup,  
pivots 45 degrees to each side  
with black delrin plan bearing sheave

Control blocks in stainless steel 316  
with black delrin plan bearing  
sheave 45 x 12 mm  
Max rope diameter 10 mm  
SWL on control line 500 kg

Article No.	Type	SWL kg	BL kg	Sheave size mm	Sheave type	Max rope mm	Length mm	Slide type	Weight g	Track mm
<b>Delrin Balls</b>										
03078	Genoa car with stop	2000	4000	60 x 33	Delrin plan bearing	16	140	Delrin Balls	700	30
03080	Genoa car with double block	2150	4300	60 x 33	Delrin plan bearing	16	180	Delrin Balls		30
03095	Genoa car with block	2150	4300	60 x 33	Delrin plan bearing	16	180	Delrin Balls		30
03096	Genoa car with eye	2000	4000	60 x 33	Delrin plan bearing	16	160	Delrin Balls		30
<b>Delrin Rods</b>										
03077	Genoa car with stop	2300	4600	60 x 33	Delrin plan bearing	16	140	Delrin Rods	700	30
03079	Genoa car with double block	2500	5000	60 x 33	Delrin plan bearing	16	180	Delrin Rods		30
03090	Genoa car with block	2500	5000	60 x 33	Delrin plan bearing	16	180	Delrin Rods		30
03091	Genoa car with eye	2300	4600	60 x 33	Delrin plan bearing	16	140	Delrin Rods		30



Choose the 30 mm travellers with recirculating balls if you want to adjust the sheet angle, even under heavy loads, and the slide rods travellers if you want a higher safe working load (SWL).



No. 03049  
No. 03050



No. 03054 / 03055 / 03056 / 03057



No. 03060  
No. 03061



No. 03063  
No. 03064



No. 03058  
No. 03059



No. 03048 - NEWS!

**Car features:**

Car body in aluminium (6082 T6)  
Anodised minimum 25 my  
Available in natural or black colour

End caps in black delrin  
8 mm eye in polished stainless steel 316  
pivots 45 degrees to each side

Control blocks in stainless steel 316  
with black delrin plan bearing  
sheave 45 x 12 mm  
Max rope diameter 10 mm  
SWL on control blocks 500 kg

Article No.	Type	SWL kg	BL kg	Sheave size mm	Sheave type	Max rope mm	Length mm	Slide type	Weight g	Track mm
<b>Delrin Balls</b>										
03048	Mainsheet car, shackle and adjustable stop	2000	4000	-	-	-	155	Delrin Balls		30
03050	Mainsheet car with eye and sheaves	1800	3600	32 x 12	Delrin plan bearing	10	135	Delrin Balls		30
03054	Car with shackle	1800	3600				135	Delrin Balls	400	30
03056	Car with shackle	1300	2600				95	Delrin Balls	290	30
03058	Car with shackle and adjustable stop	1800	3600				135	Delrin Balls		30
03060	Outhaulcar with block	2000	4000	45 x 12	Delrin plan bearing	10	160	Delrin Balls	500	30
03064	Outhaulcar with double block	2000	4000	45 x 12	Delrin plan bearing	10	160	Delrin Balls		30
<b>Delrin Rods</b>										
03049	Mainsheet car with eye and blocks	2000	4000	32 x 12	Delrin plan bearing	10	135	Delrin Rods		30
03055	Car with shackle	2000	4000				135	Delrin Rods	400	30
03057	Car with shackle	1400	2800				95	Delrin Rods	290	30
03059	Car with shackle and adjustable stop	2000	4000				135	Delrin Rods		30
03061	Outhaulcar with block	2400	4800	45 x 12	Delrin plan bearing	10	160	Delrin Rods	500	30
03063	Outhaulcar with double block	2400	4800	45 x 12	Delrin plan bearing	10	160	Delrin Rods		30



Choose the 30 mm travellers with recirculating balls if you want to adjust the sheet angle, even under heavy loads, and the slide rods travellers if you want a higher safe working load (SWL).



No. 03081  
No. 03082



No. 03083  
No. 03084



No. 03085  
No. 03086



No. 03087  
No. 03088

**Car features:**

Car body in aluminium (6082 T6)  
Anodised minimum 25 my  
Available in natural or black colour

End caps in black delrin  
8 mm eye in polished stainless steel 316  
pivots 45 degrees to each side  
Cam cleats are adjustable in 3 positions

Control blocks in stainless steel 316  
with black delrin plan bearing  
sheave 45 x 12 mm  
Max rope diameter 10 mm  
SWL on control blocks 500 kg

Article No.	Type	SWL kg	BL kg	Sheave size mm	Sheave type	Max rope mm	Length mm	Slide type	Weight g	Track mm
<b>Delrin Balls</b>										
03082	Mainsheet car with double blocks, becket and cam cleats	2200	4400	45 x 12	Delrin plan bearing	10	280	Delrin Balls		30
03084	Mainsheet car with blocks, becket and cam cleats	2200	4400	45 x 12	Delrin plan bearing	10	280	Delrin Balls		30
03086	Mainsheet car with blocks	2200	4400	45 x 12	Delrin plan bearing	10	230	Delrin Balls		30
03088	Mainsheet car with double blocks	2200	4400	45 x 12	Delrin plan bearing	10	230	Delrin Balls		30
<b>Delrin Rods</b>										
03081	Mainsheet car with double blocks, becket and cam cleats	2600	5200	45 x 12	Delrin plan bearing	10	280	Delrin Rods		30
03083	Mainsheet car with blocks, becket and cam cleats	2600	5200	45 x 12	Delrin plan bearing	10	280	Delrin Rods		30
03085	Mainsheet car with blocks	2600	5200	45 x 12	Delrin plan bearing	10	230	Delrin Rods		30
03087	Mainsheet car with double blocks	2600	5200	45 x 12	Delrin plan bearing	10	230	Delrin Rods		30

*Choose the 30 mm travellers with recirculating balls if you want to adjust the sheet angle, even under heavy loads, and the slide rods travellers if you want a higher safe working load (SWL).*



No. 03094  
No. 03099



No. 03113  
No. 03114



No. 03117  
No. 03118



No. 03145  
No. 03146

**Car features:**

Car body in aluminium (6082 T6)  
Anodised minimum 25 my  
Available in natural or black colour

End caps in black delrin  
8 mm eye in polished stainless steel 316  
pivots 45 degrees to each side  
Cam cleats are adjustable i 3 positions

Control blocks in stainless steel 316  
with black delrin plan bearing  
sheave 45 x 12 mm  
Max rope diameter 10 mm  
SWL on control blocks 500 kg

Article No.	Type	SWL kg	BL kg	Sheave size mm	Sheave type	Max rope mm	Length mm	Slide type	Weight g	Track mm
<b>Delrin Balls</b>										
03099	Mainsheet car with blocks and cam cleat	2200	4400	45 x 12	Delrin plan bearing	10	230	Delrin Balls		30
03114	Mainsheet car with blocks and becket	2200	4400	45 x 12	Delrin plan bearing	10	280	Delrin Balls	835	30
03118	Mainsheet car with double blocks and becket	2200	4400	45 x 12	Delrin plan bearing	10	280	Delrin Balls	930	30
03146	Mainsheet car with blocks	3000	6000	75 x 33	Aluminium ball bearing	16	280	Delrin Balls	1600	30
<b>Delrin Rods</b>										
03094	Mainsheet car with blocks and cam cleat	2600	5200	45 x 12	Delrin plan bearing	10	230	Delrin Rods		30
03113	Mainsheet car with blocks and becket	2600	5200	45 x 12	Delrin plan bearing	10	280	Delrin Rods	835	30
03117	Mainsheet car with double blocks and becket	2600	5200	45 x 12	Delrin plan bearing	10	280	Delrin Rods	930	30
03145	Mainsheet car with blocks	3000	6000	75 x 33	Aluminium ball bearing	16	280	Delrin Rods	1600	30



Choose the 30 mm travellers with recirculating balls if you want to adjust the pole angle, even under heavy loads, and the slide rods travellers if you want a higher safe working load (SWL).



No. 03073 / 03074 / 03075 / 03076



No. 03111 / 03112 / 03149 / 03150



No. 03093 / 03098 / 03147 / 03148

See page 44 for pole ends

**Car features:**

Car body in aluminium (6082 T6)  
Anodised minimum 25 my  
Available in natural black colour

End caps in black delrin  
21.5/27 mm bajonet in aluminium  
and polished stainless steel 316  
pivots 95 degrees to each side

Control blocks in stainless steel 316  
with black delrin plan bearing  
sheave 45 x 12 mm  
Max rope diameter 10 mm  
SWL on control line 500 kg

Article No.	Type	SWL kg	BL kg	Sheave size mm	Sheave type	Max rope mm	Length mm	Slide type	Weight g	Track mm
<b>Delrin Balls</b>										
03074	Spinnaker car with blocks and 27 mm bajonet for pole end	2750	5500	45 x 12	Delrin plan bearing	10	265	Delrin Balls	1293	30
03076	Spinnaker car with blocks and 21.5 mm bajonet for pole end	2400	4800	45 x 12	Delrin plan bearing	10	250	Delrin Balls		30
03098	Spinnaker car with shackles and 21.5 mm bajonet for pole end	1800	3600			10	140	Delrin Balls		30
03148	Spinnaker car with shackles and 27 mm bajonet for pole end	2000	4000				160	Delrin Balls		30
03112	Spinnaker car with stop and 21.5 mm bajonet for pole end	1800	3600				155	Delrin Balls	780	30
03150	Spinnaker car with stop and 27 mm bajonet for pole end	2000	4000				160	Delrin Balls		30
<b>Delrin Rods</b>										
03073	Spinnaker car with blocks and 27 mm bajonet for pole end	3200	6400	45 x 12	Delrin plan bearing	10	265	Delrin Rods	1293	30
03075	Spinnaker car with blocks and 21.5 mm bajonet for pole end	2800	5600	45 x 12	Delrin plan bearing	10	250	Delrin Rods		30
03093	Spinnaker car with shackles and 21.5 mm bajonet for pole end	1800	3600			10	140	Delrin Rods		30
03147	Spinnaker car with shackles and 27 mm bajonet for pole end	2000	4000				160	Delrin Rods		30
03111	Spinnaker car with stop and 21.5 mm bajonet for pole end	2000	4000				155	Delrin Rods	780	30
03149	Spinnaker car with stop and 27 mm bajonet for pole end	2000	4000				160	Delrin Rods		30



**Choose the 30 mm travellers with recirculating balls if you want to adjust the pole angle, even under heavy loads, and the slide rods travellers if you want a higher safe working load (SWL).**



No. 03109  
No. 03110

*Our products require only a minimum of maintenance. However, all equipment needs occasional cleaning. The best way is simply to clean in fresh water, when you are cleaning the boat and after having dried up spray with our OH Teflon Dry Spray. It is important that you DON'T use products containing silicon, oil etc. as they attract salt and dirt. It will end up working as a grinding compound in bearings, hubs etc.*



No. 03065  
No. 03066



No. 03089  
No. 03097

**Car features:**

Car body in aluminium (6082 T6)  
Anodised minimum 25 my  
Available in natural or black colour

End caps in black delrin  
Ring (40 x 50 mm) in polished  
stainless steel 316

Control blocks in stainless steel 316  
with black plan bearing  
sheave 45 x 12 mm  
Max rope diameter 10 mm  
SWL on control blocks 500 kg

Article No.	Type	SWL kg	BL kg	Sheave size mm	Sheave type	Max rope mm	Length mm	Slide type	Weight g	Track mm
<b>Delrin Balls</b>										
03066	Spinnaker car with ring (inside 40 mm) and stop	1800	3600				140	Delrin Balls		30
03097	Spinnaker car with ring (inside 40 mm) and 5 mm shackles	1800	3600			10	140	Delrin Balls		30
03110	Spinnaker car with ring (inside 40 mm) and blocks	2100	4200	45 x 12	Delrin plan bearing	10	250	Delrin Balls		30
<b>Delrin Rods</b>										
03065	Spinnaker car with ring (inside 40 mm) and stop	2000	4000				140	Delrin Rods		30
03089	Spinnaker car with ring (inside 40 mm) and 5 mm shackles	2000	4000			10	140	Delrin Rods		30
03109	Spinnaker car with ring (inside 40 mm) and blocks	2500	5000	45 x 12	Delrin plan bearing	10	250	Delrin Rods		30



Choose the 30 mm travellers with recirculating balls if you want to adjust the main sail, even under heavy loads, and the slide rods travellers if you want a higher safe working load (SWL).



No. 03130  
No. 03131



No. 03134  
No. 03135



No. 03132  
No. 03133



No. 03138  
No. 03139



No. 03136  
No. 03137

**Car features:**

Car body in aluminium (6082 T6)  
Anodised minimum 25 my  
Available in natural or black colour

End caps in black delrin  
Toggle and thread in aluminium  
Anodised minimum 25 my

See page 39 for tracks  
and mast groove slugs

Article No.	Type	SWL kg	BL kg	A mm	B mm	Width mm	Length mm	Slide type	Weight g	Track mm
<b>Delrin Balls</b>										
03130	Headboard car with stainless steel holder for headboard	2000	4000	43.5	88.5	65	255	Delrin Balls	1095	30
03132	Batten car with toggle and M12 mm tread for retainer	1400	2800	43.5	78	65	118	Delrin Balls	450	30
03134	Batten car with toggle and M12 mm tread for retainer	800	1600	43.5	78	65	77	Delrin Balls	315	30
03136	Webbing car	800	1600	43.5	57	65	77	Delrin Balls	240	30
03138	Webbing car STRONG	1400	2800	43.5	57	65	118	Delrin Balls	430	30
<b>Delrin Rods</b>										
03131	Headboard car with stainless steel holder for headboard	2400	4800	43.5	88.5	65	255	Delrin Rods	1095	30
03133	Batten car with toggle and M12 mm tread for retainer	1600	3200	43.5	78	65	118	Delrin Rods	450	30
03135	Batten car with toggle and M12 mm tread for retainer	900	1800	43.5	78	65	77	Delrin Rods	315	30
03137	Webbing car	900	1800	43.5	57	65	77	Delrin Rods	240	30
03139	Webbing car STRONG	1600	3200	43.5	57	65	118	Delrin Rods	430	30



No. 03053



No. 03045\* - NEWS!



No. 03072



No. 03071



No. 03070



No. 03068

**Car features:**

Car body in aluminium (6082 T6)  
Anodised minimum 25 my  
Available in natural or black colour

End caps in black delrin  
10 mm Pinol screw, ables  
you to lock it to the track  
Cam cleats are adjustable in 3 positions

Control blocks in stainless steel 316  
with black delrin plan bearing  
sheave 45 x 12 mm  
Max rope diameter 10 mm  
Max SWL on control line 500 kg

Article No.	Type	SWL kg	BL kg	Sheave size mm	Sheave type	Max rope mm	Length mm	Slide type	Weight g	Track mm
<b>Delrin Rods</b>										
03045**	Control block, single, vertical draw - NEWS!	500	1000	25 x 12	Delrin plan bearing	10	76	Delrin Rods	275	30
03047**	Control block, double, vertical draw - NEWS!	500	1000	25 x 12	Delrin plan bearing	10	76	Delrin Rods	345	30
03053	Stop adjustable	500	1000				71	Delrin Rods	185	30
03067	Control block double with becket and cam cleat (Starboard)	500	1000	45 x 12	Delrin plan bearing	10	140	Locked	605	30
03068	Control block double with becket and cam cleat (Port)	500	1000	45 x 12	Delrin plan bearing	10	140	Locked	605	30
03069	Control block with becket and cam cleat (Starboard)	500	1000	45 x 12	Delrin plan bearing	10	140	Locked	560	30
03070	Control block with becket and cam cleat (Port)	500	1000	45 x 12	Delrin plan bearing	10	140	Locked	560	30
03071	Control block double with becket	500	1000	45 x 12	Delrin plan bearing	10	140	Locked	485	30
03072	Control block with becket	500	1000	45 x 12	Delrin plan bearing	10	140	Locked	440	30

\* Available with two sheaves (double)

\*\* Available with aluminium ball bearing sheave on request

Article No.	Type	Screw size mm ***	Eye mm
007520	Clips for line/becket - NEWS!	5	Ø9
007521	Clips for line/becket - NEWS!	6	Ø9
008820	Clips for line/becket - NEWS!	6	Ø12

\*\*\* Not included





No. 03115



No. 03116



No. 03119



No. 03121

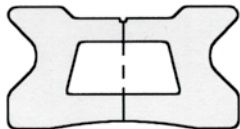
**Car features:**

Car body in aluminium (6082 T6)  
Anodised minimum 25 my  
Available in natural or black colour

End caps in black delrin  
10 mm Pinol screw, ables  
you to lock it to the track  
Cam cleats are adjustable in 3 positions

Control blocks in stainless steel 316  
with black delrin plan bearing  
sheave 45 x 12 mm  
Max rope diameter 10 mm  
SWL on control line 500 kg

Article No.	Type	SWL kg	BL kg	Sheave size mm	Sheave type	Max rope mm	Length mm	Slide type	Weight g	Track mm
<b>Delrin Rods</b>										
03115	Control block	500	1000	45 x 12	Delrin plan bearing	10	111	Locked	330	30
03116	Control block double	500	1000	45 x 12	Delrin plan bearing	10	111	Locked	370	30
03119	Control block with cam cleat (Port)	500	1000	45 x 12	Delrin plan bearing	10	111	Locked	330	30
03120	Control block with cam cleat (Starboard)	500	1000	45 x 12	Delrin plan bearing	10	111	Locked	330	30
03121	Control block double with cam cleat (Port)	500	1000	45 x 12	Delrin plan bearing	10	111	Locked	330	30
03122	Control block double with cam cleat (Starboard)	500	1000	45 x 12	Delrin plan bearing	10	111	Locked	330	30



No. 03307



Mast groove slugs

**Track features:**

Track in aluminium (6082 T6)  
Anodised minimum 25 my  
Available in natural or black colour

Article No.	Type	Length m	Width mm	Height mm	Hole pitch mm	Fasteners mm	Weight g	Compatibility
03340	30 Track	1	30	16	50	6	790	Ronstan, John Mast
03341	30 Track	1.5	30	16	50	6	1185	Ronstan, John Mast
03342	30 Track	2	30	16	50	6	1580	Ronstan, John Mast
03343	30 Track	2.5	30	16	50	6	1975	Ronstan, John Mast
03344	30 Track	3	30	16	50	6	2370	Ronstan, John Mast
03345	30 Track	4	30	16	50	6	3160	Ronstan, John Mast
03346	30 Track	5	30	16	50	6	3950	Ronstan, John Mast
03347	30 Track	6	30	16	50	6	4740	Ronstan, John Mast
03303	Delrin end cap for 30 track	27 mm	34	19		6	14	
03307	Alu end for 30 track	58 mm	50	35	35	6	122	
03371	30 track assembly	33 mm	12	4			2	
03378	Mast groove slug for 30 mm track	30 mm	Ø 14			6		
03379	Mast groove slug for 30 mm track	30 mm	Ø 10			6		
03380	Mast groove slug for 30 mm track	30 mm	Ø 12			6		
03381	Mast groove slug for 30 mm track	30 mm	25	5		6		
03382	Mast groove slug for 30 mm track	30 mm	25	6		6		
03383	Mast groove slug for 30 mm track	30 mm	30	6		6		
03385	Mast groove slug for 30 mm track	25 mm	21	6		6		



Choose the 42 mm travellers with recirculating balls if you want to adjust the sheet angle, even under heavy loads, and the slide rods travellers if you want a higher safe working load (SWL).



No. 04215\* / 04315  
No. 04216\* / 04316



No. 04217\* / 04317  
No. 04218\* / 04318



No. 04219\* / 04319  
No. 04220\* / 04320

**Genoa car features:**

Car body in aluminium (6082 T6)

Anodised minimum 25 my - available in natural or black colour

End caps in aluminium

Polished stainless steel 316 stirrup,  
pivots 45 degrees to each side  
with aluminium ball bearing sheave

Control blocks in stainless steel 316  
with aluminium ball bearing sheave  
hub in PET (white)

42 Medium - Size 57 x 16 mm  
Max rope diameter 14 mm  
SWL on control line 1300 kg

42 Large - Size 75 x 20 mm  
Max rope diameter 16 mm  
SWL on control line 1800 kg

**42 Medium:**

Article No.	Type	SWL kg	BL kg	Sheave size mm	Sheave type	Max rope mm	Length mm	Slide type	Weight g	Track mm
<b>Delrin Balls</b>										
04216	Genoa car with stop	3100	6200	100 x 45	Aluminium ball bearing*	25	200	Delrin Balls	2450	42
04218	Genoa car with eye	3100	6200	100 x 45	Aluminium ball bearing*	25	200	Delrin Balls	2490	42
04220	Genoa car with control block	3400	6800	100 x 45	Aluminium ball bearing*	25	250	Delrin Balls	2805	42
<b>Delrin Rods</b>										
04215	Genoa car with stop	3700	7400	100 x 45	Aluminium ball bearing*	25	185	Delrin Rods	2450	42
04217	Genoa car with eye	3700	7400	100 x 45	Aluminium ball bearing*	25	185	Delrin Rods	2490	42
04219	Genoa car with control block	4000	8000	100 x 45	Aluminium ball bearing*	25	250	Delrin Rods	2805	42

**42 Large:**

Article No.	Type	SWL kg	BL kg	Sheave size mm	Sheave type	Max rope mm	Length mm	Slide type	Weight g	Track mm
<b>Delrin Balls</b>										
04316	Genoa car with stop	4300	8600	150 x 45	Aluminium ball bearing	25	280	Delrin Balls		42
04318	Genoa car with eye	4300	8600	150 x 45	Aluminium ball bearing	25	280	Delrin Balls		42
04320	Genoa car with control block	5100	10200	150 x 45	Aluminium ball bearing	25	325	Delrin Balls		42
<b>Delrin Rods</b>										
04315	Genoa car with stop	5000	10000	150 x 45	Aluminium ball bearing	25	245	Delrin Rods		42
04317	Genoa car with eye	5000	10000	150 x 45	Aluminium ball bearing	25	245	Delrin Rods		42
04319	Genoa car with control block	5600	12000	150 x 45	Aluminium ball bearing	25	300	Delrin Rods		42

\*Also available with black PET plan bearing sheave



Choose the 42 mm travellers with recirculating balls if you want to adjust the sheet angle, even under heavy loads, and the slide rods travellers if you want a higher safe working load (SWL).



No. 04201\* / 04301 / 04202? / 04302



No. 04208\*



No. 04203 / 04303 / 04204 / 04304

**Car features:**

Car body in aluminium (6082 T6)  
Anodised minimum 25 my  
Available in natural or black colour

End caps in aluminium  
Stirrup in polished stainless steel 316  
pivots 45 degrees to each side

Control blocks in stainless steel 316  
with aluminium ball bearing sheave  
hub in PET (white)

42 Medium - Size 57 x 16 mm  
Max rope diameter 14 mm  
SWL on control line 1300 kg

42 Large - Size 75 x 20 mm  
Max rope diameter 16 mm  
SWL on control line 1800 kg

**42 Medium:**

Article No.	Type	SWL kg	BL kg	Sheave size mm	Sheave type	Max rope mm	Length mm	Slide type	Weight g	Track mm
<b>Delrin Balls</b>										
04202	Mainsheet car with control blocks	4250	8500	100 x 45	Aluminium ball bearing*	25	340	Delrin Balls	4795	42
04204	Mainsheet car with 10 mm shackles and control blocks	3000	6000		Aluminium ball bearing		300	Delrin Balls	1940	42
04206	Mainsheet car with control blocks	4000	8000	100 x 45	Aluminium ball bearing	25	330	Delrin Balls		42
04208	Mainsheet car with control blocks and cam cleats	4000	8000	100 x 45	Aluminium ball bearing*	25	330	Delrin Balls		42
<b>Delrin Rods</b>										
04201	Mainsheet car with control blocks	5000	10000	100 x 45	Aluminium ball bearing*	25	325	Delrin Rods	4795	42
04203	Mainsheet car with 10 mm shackles and control blocks	3000	6000		Aluminium ball bearing		275	Delrin Rods	1940	42

**42 Large:**

Article No.	Type	SWL kg	BL kg	Sheave size mm	Sheave type	Max rope mm	Length mm	Slide type	Weight g	Track mm
<b>Delrin Balls</b>										
04302	Mainsheet car with control blocks	6800	13600	150 x 45	Aluminium ball bearing	25	450	Delrin Balls		42
04304	Mainsheet car with 12 mm shackles and control blocks	4000	8000		Aluminium ball bearing	25	370	Delrin Balls		42
<b>Delrin Rods</b>										
04301	Mainsheet car with control blocks	8000	16000	150 x 45	Aluminium ball bearing	25	420	Delrin Rods		42
04303	Mainsheet car with 12 mm shackles and control blocks	4000	8000		Aluminium ball bearing	25	355	Delrin Rods		42

\*Also available with black PET plan bearing sheave

Choose the 42 mm travellers with recirculating balls if you want to adjust the pole angle, even under heavy loads, and the slide rods travellers if you want a higher safe working load (SWL).



No. 04231 / 04331  
No. 04232 / 04332



No. 04233 / 04333  
No. 04234 / 04334

See page 44 for pole ends

**Car features:**

Car body in aluminium (6082 T6)  
Anodised minimum 25 µm  
Available in natural or black colour

End caps in aluminium  
42 Medium - 27 mm bajonet  
42 Large - 35 mm bajonet  
in aluminium and polished stainless steel 316 pivots 95 degrees to each side

Control blocks in stainless steel 316 with aluminium ball bearing sheave hub in PET (white)  
42 Medium - Size 57 x 16 mm  
Max rope diameter 14 mm  
SWL on control line 1300 kg  
42 Large - Size 75 x 20 mm  
Max rope diameter 16 mm  
SWL on control line 1800 kg

**42 Medium:**

Article No.	Type	SWL kg	BL kg	Sheave size mm	Sheave type	Max rope mm	Length mm	Slide type	Weight g	Track mm
<b>Delrin Balls</b>										
04232	Spinnaker car with 27 mm bajonet for pole end and blocks for control	3000	6000	57 x 16	Aluminium ball bearing	14	315	Delrin Balls	2570	42
04234	Spinnaker car with 27 mm bajonet for pole end and shackles for control	2300	4600				250	Delrin Balls	2005	42
<b>Delrin Rods</b>										
04231	Spinnaker car with 27 mm bajonet for pole end and blocks for control	3500	7000	57 x 16	Aluminium ball bearing	14	300	Delrin Rods	2570	42
04233	Spinnaker car with 27 mm bajonet for pole end and shackles for control	2700	5400				235	Delrin Rods	2005	42

**42 Large:**

Article No.	Type	SWL kg	BL kg	Sheave size mm	Sheave type	Max rope mm	Length mm	Slide type	Weight g	Track mm
<b>Delrin Balls</b>										
04332	Spinnaker car with 35 mm bajonet for pole end and blocks for control	4250	8500	75 x 20	Aluminium ball bearing	16	370	Delrin Balls		42
04334	Spinnaker car with 35 mm bajonet for pole end and shackles for control	3400	6800				280	Delrin Balls		42
<b>Delrin Rods</b>										
04331	Spinnaker car with 35 mm bajonet for pole end and blocks for control	5000	10000	75 x 20	Aluminium ball bearing	16	370	Delrin Rods		42
04333	Spinnaker car with 35 mm bajonet for pole end and shackles for control	4000	8000				280	Delrin Rods		42



No. 04245 / 04345



No. 04247 / 04347

**Car features:**

Car body in aluminium (6082 T6)  
Anodised minimum 25 my  
Available in natural or black colour

End caps in aluminium  
12 mm Pinol screw, ables  
you to lock it to the track

Control blocks in stainless steel 316  
with aluminium ball bearing sheave  
hub in PET (white)

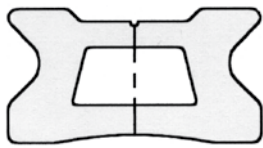
42 Medium - Size 57 x 16 mm  
Max rope diameter 14 mm  
SWL on control line 1300 kg  
42 Large - Size 75 x 20 mm  
Max rope diameter 16 mm  
SWL on control line 1800 kg

**42 Medium:**

Article No.	Type	SWL kg	BL kg	Sheave size mm	Sheave type	Max rope mm	Length mm	Slide type	Weight g	Track mm
<b>Delrin Rods</b>										
04245	Single control block	1800	3600	57 x 16	Aluminium ball bearing	14	100	Locked	755	42
04247	Single control block with becket	1800	3600	57 x 16	Aluminium ball bearing	14	130	Locked	915	42

**42 Large:**

Article No.	Type	SWL kg	BL kg	Sheave size mm	Sheave type	Max rope mm	Length mm	Slide type	Weight g	Track mm
<b>Delrin Rods</b>										
04345	Single control block	2400	4800	75 x 20	Aluminium ball bearing	16	120	Locked		42
04347	Single control block with becket	2400	4800	75 x 20	Aluminium ball bearing	16	160	Locked		42



**Track features:**

Track in aluminium (6082 T6)  
Anodised minimum 25 my  
Available in natural or black colour



No. 03308



No. 04253

Article No.	Type	Length m	Width mm	Height mm	Hole pitch mm	Fastenings mm	Weight g	Compatibility
03360	42 mm Track	1	42	21	50	8	1445	Ronstan
03361	42 mm Track	1.5	42	21	50	8	2168	Ronstan
03362	42 mm Track	2	42	21	50	8	2890	Ronstan
03363	42 mm Track	2.5	42	21	50	8	3163	Ronstan
03364	42 mm Track	3	42	21	50	8	4335	Ronstan
03365	42 mm Track	4	42	21	50	8	5780	Ronstan
03366	42 mm Track	5	42	21	50	8	7225	Ronstan
03367	42 mm Track	6	42	21	50	8	8670	Ronstan
03308	Alu end stop for 42 mm track	49 mm	60	25		8	135	
04253	Stop adjustable for 42 mm track	75 mm					500	





**Spinnaker pole end features:**  
Body in aluminium (6082 T6)  
Black anodised minimum 25 my

Lock in stainless steel 316

Article No.	Type	Bajonet size mm	Tube size mm	Lenght outside tube mm	weight g
306055	Pole end	21.5	60 x 55	60	275
307066	Pole end	21.5	70 x 66	67	375
307672	Pole end	21.5	76 x 72	82	430
308076	Pole end	21.5	80 x 76	84.5	510
309085	Pole end	21.5	90 x 85	75	715
310094	Pole end	21.5	100 x 94	92	800
310095	Pole end	27	100 x 94	92	900
311511	Pole end	27	115 x 110	110	1290
312011	Pole end	27	120 x 114	80	1320
312012	Pole end	35	120 x 114	80	1200
314013	Pole end	35	140 x 130	80	1500

*Our products require only a minimum of maintenance. However, all equipment needs occasional cleaning. The best way is simply to clean in fresh water, when you are cleaning the boat and after having dried up spray with our teflon dry spray! It is important that you DON'T use products containing silicon, oil etc. as they attract salt and dirt. It will end up working as a grinding compound in bearings, hubs etc.*



*A special dry spray with teflon has been developed for OH MARINE EQUIPMENT for the maritime environment for lubrication of bearings, cam cleats, winches, genoa cars, luff tracks etc.*

*OH Teflon Dry Spray will dry up in a few minutes leaving a thin film of dry teflon with great reduction of friction and excellent glide factor without being greasy. OH Teflon Dry Spray is colourless and therefore excellent for lubrication of for example luff tracks as it does not stain the sails.*

*The teflon dry spray uses carbon dioxide as propellant*

*Content: Concentrate 260 ml, propellant 10 ml*



No. 850000



No. 850012

*Tuff-Gel is for all metal threads and for locking screws. It seals fast, resists vibration loosening, oil and solvents and prevents galling.*



No. 850010

*Tef-Gel stops corrosion of stainless screws in aluminium and any other dissimilar metal corrosion. Furthermore, it stops seizing and galling of stainless bolts and nuts.*



## "Need a hand?"



"Quick, get a turn on him".

## We have the solution!

**A self-locking boathook - easily operated with one hand.**

***Available in 3 sizes!***



The jaw of the hook.



The fence is pulled back and the jaw of the hook is open.



The fence is released and the jaw of the hook is closed.

The boathook is available in 3 different sizes (lengths) - 75, 100 and 125 cm - and constructed in such a way that the jaw of the hook closes when the buoy is caught. The jaw is opened by simply using the handle at the top of the rod. The boathook can easily be operated with one hand.

Article No.	Type	Length cm	Weight g
830023	Boathook, 75 cm	75	1100
830024	Boathook, 100 cm	100	1400
830025	Boathook, 125 cm	125	1680

*OH Marine Equipment has made a spinnaker pole car and a loop for vertical stowage of the spinnaker on mast.*

*The spinnaker pole car consists of a control block with support for the spinnaker pole. The loop is mounted on the mast completely stabilizing the spinnaker pole during stowage.*

*For haul up in the masthead we recommend using a car with control block - art. no. 2315 for 22 mm and art. no 2526 for 25 mm track.*

*The car is available for 22 and 25 mm tracks, but can also be made for 30, 32 and 42 mm tracks on request.*



**Car:**  
Car body in aluminium  
(6082 T6)  
Anodised minimum 25 my  
Available in colours black  
or natural

End caps in black delrin  
8 mm Pinol screw, locking  
the car to track if required.



**Loop:**  
Stainless steel 316  
Washers and  
fasteners included



Article No.	Type	SWL kg	BL kg	Sheave size mm	Sheave type	Max rope	Length mm	Weight g	Track mm
02273	Spinnaker pole car with support, 60-70 mm pole	300	600	35 x 10	Delrin plan bearing	8			22
02274	Spinnaker pole car with support, 70-85 mm pole	300	600	35 x 10	Delrin plan bearing	8			22
02573	Spinnaker pole car with support, 60-70 mm pole	300	600	35 x 10	Delrin plan bearing	8			25
02574	Spinnaker pole car with support, 70-85 mm pole	300	600	35 x 10	Delrin plan bearing	8			25
830000	Loop for spinnaker pole lift system								